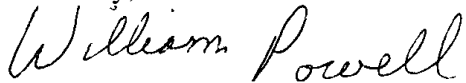


February 8, 2006

SUBJECT: HORTON INBOUND SHIPPING REQUIREMENTS

Due to recent changes in our receiving department, it is important that all inbound material from our suppliers be shipped on one of the following types of pallets: 40 x 48 inch pallet four way, 38 x 48 pallet, 32 x 32 inch pallet or a 30 x 30 inch pallet with the 40 x 48 four way being the preferred one. Runners should be of 2 x 4 construction. Please restrict your pallet use for Horton shipments to one of these sizes. April 1st is our mandatory implementation date for this change. Suppliers who fail to comply may be charged back for failure to comply.

Sincerely,

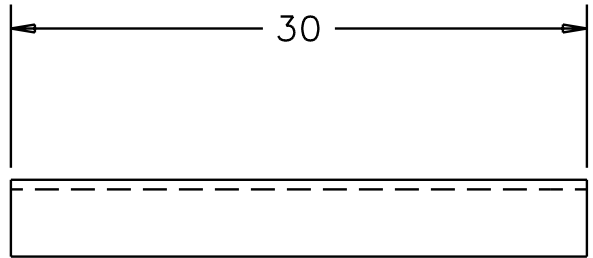
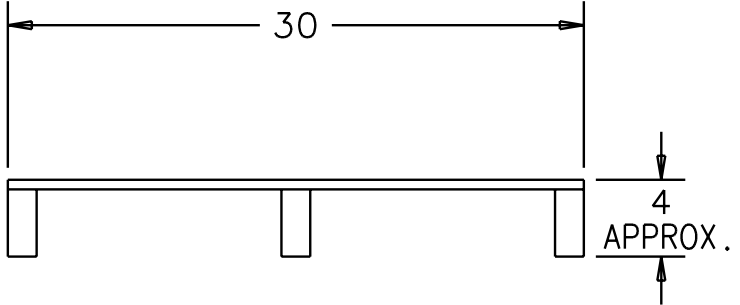
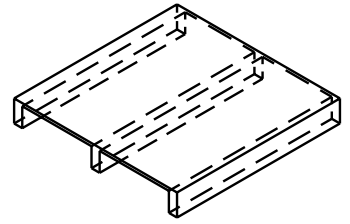
A handwritten signature in cursive script that reads "William Powell".

William Powell
Senior Logistic Coord.

2

1

XXXXXXXX



UNLESS OTHERWISE SPECIFIED

- 1. SURFACE TEXTURE: ✓
- 2. TOLERANCES .XX ±.02; .XXX ±.005
- 3. ANGLES ±30'
- 4. DIMENSIONS ARE IN INCHES
- 5. REMOVE ALL BURRS AND SHARP EDGES
- 6. DO NOT SCALE DWG - WORK TO DIMS
- 7. PART MUST CONFORM TO ENGINEERING STANDARD WORK INSTRUCTIONS



HORTON, INC.
ROSEVILLE, MN

TITLE PALLET, 2-WAY, 30

MODEL XXX

MATL WOOD /#

DWN VWS DATE 03-21-06 SCALE NONE

CHKD XXX DATE XX-XX-XX

APVD XXX DATE XX-XX-XX

REV	ECO	ERO	DATE
WAS			
SIZE	SHEET 1 OF 1		REV
A	XXXXXXXX		1

2

1

B

B

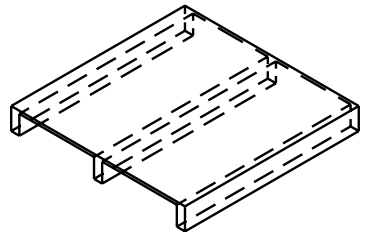
A

A

2

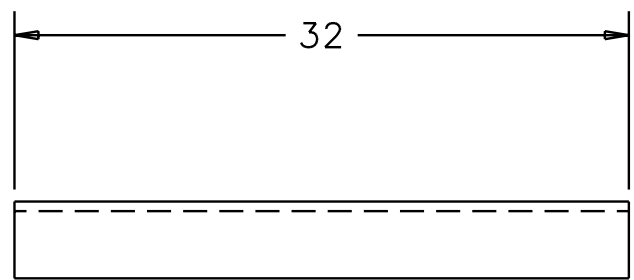
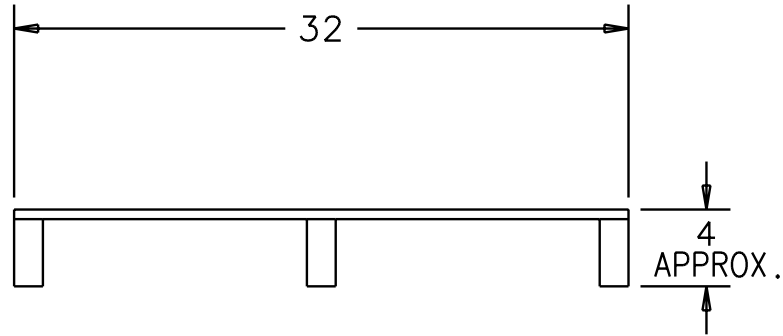
1

XXXXXXXX



B

B



A

A

UNLESS OTHERWISE SPECIFIED

- 1. SURFACE TEXTURE: ✓
- 2. TOLERANCES .XX ±.02; .XXX ±.005
- 3. ANGLES ±30'
- 4. DIMENSIONS ARE IN INCHES
- 5. REMOVE ALL BURRS AND SHARP EDGES
- 6. DO NOT SCALE DWG - WORK TO DIMS
- 7. PART MUST CONFORM TO ENGINEERING STANDARD WORK INSTRUCTIONS



HORTON, INC.
ROSEVILLE, MN

TITLE PALLET, 2-WAY, 32

MODEL XXX

MATL WOOD /#

DWN VWS DATE 03-21-06 SCALE XX

CHKD XXX DATE XX-XX-XX

APVD XXX DATE XX-XX-XX

REV	ECO	ERO	DATE
WAS			
SIZE	SHEET 1 OF 1		REV
A	XXXXXXXX		1

2

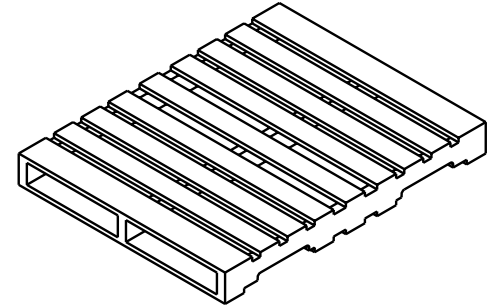
1



2

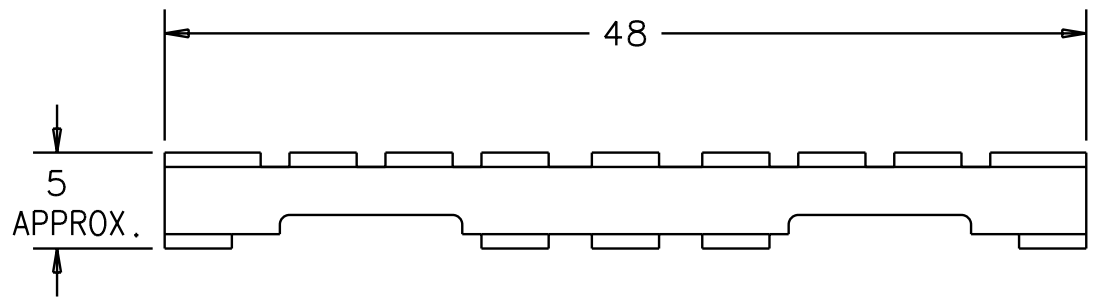
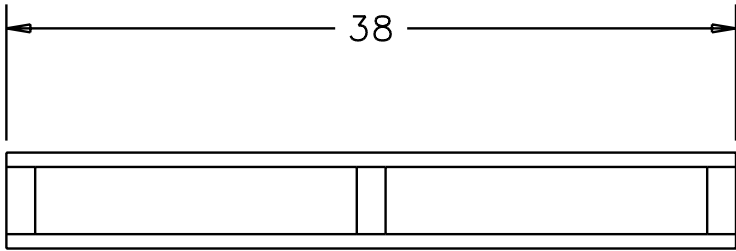
1

XXXXXXXX



B

B



A

A

UNLESS OTHERWISE SPECIFIED

- 1. SURFACE TEXTURE: ✓
- 2. TOLERANCES .XX ±.02; .XXX ±.005
- 3. ANGLES ±30'
- 4. DIMENSIONS ARE IN INCHES
- 5. REMOVE ALL BURRS AND SHARP EDGES
- 6. DO NOT SCALE DWG - WORK TO DIMS
- 7. PART MUST CONFORM TO ENGINEERING STANDARD WORK INSTRUCTIONS



HORTON, INC.
ROSEVILLE, MN

TITLE PALLET, 4-WAY, SM

MODEL XXX

MATL WOOD /#

DWN VWS DATE 03-21-06 SCALE XX

CHKD XXX DATE XX-XX-XX

APVD XXX DATE XX-XX-XX

REV	ECO	ERO	DATE
-----	-----	-----	------

WAS			
-----	--	--	--

SIZE	SHEET 1 OF 1	REV
A	XXXXXXXX	1

2

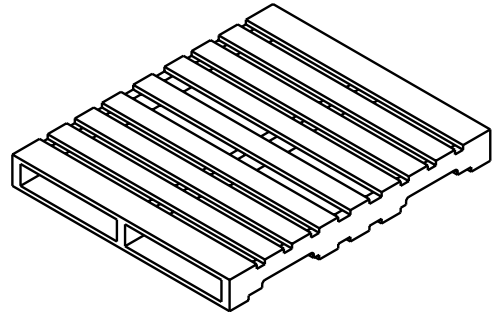
1



2

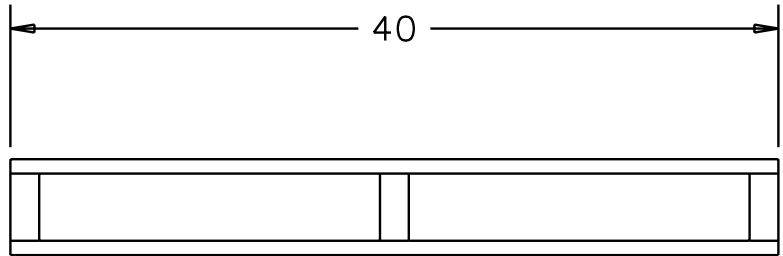
1

XXXXXXXX

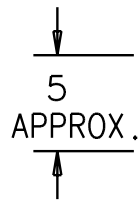


B

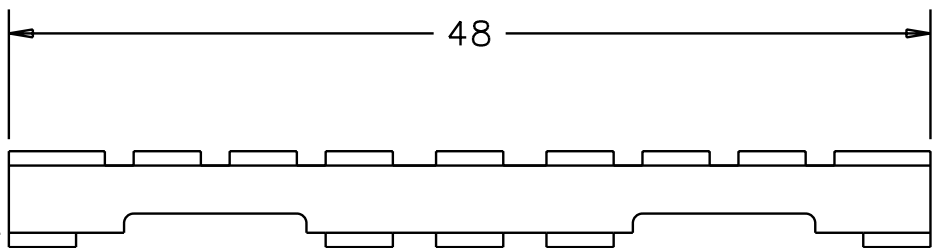
B



40



5
APPROX.



48

A

A

UNLESS OTHERWISE SPECIFIED

- 1. SURFACE TEXTURE: ✓
- 2. TOLERANCES .XX ±.02; .XXX ±.005
- 3. ANGLES ±30'
- 4. DIMENSIONS ARE IN INCHES
- 5. REMOVE ALL BURRS AND SHARP EDGES
- 6. DO NOT SCALE DWG - WORK TO DIMS
- 7. PART MUST CONFORM TO ENGINEERING STANDARD WORK INSTRUCTIONS



HORTON, INC.
ROSEVILLE, MN

TITLE PALLET, 4-WAY

MODEL XXX

MATL WOOD

/#

DWN VWS

DATE 03-21-06

SCALE XX

CHKD XXX

DATE XX-XX-XX

APVD XXX

DATE XX-XX-XX

REV	ECO	ERO	DATE
WAS			
SIZE	SHEET 1 OF 1		REV
A	XXXXXXXX		1

2

1

